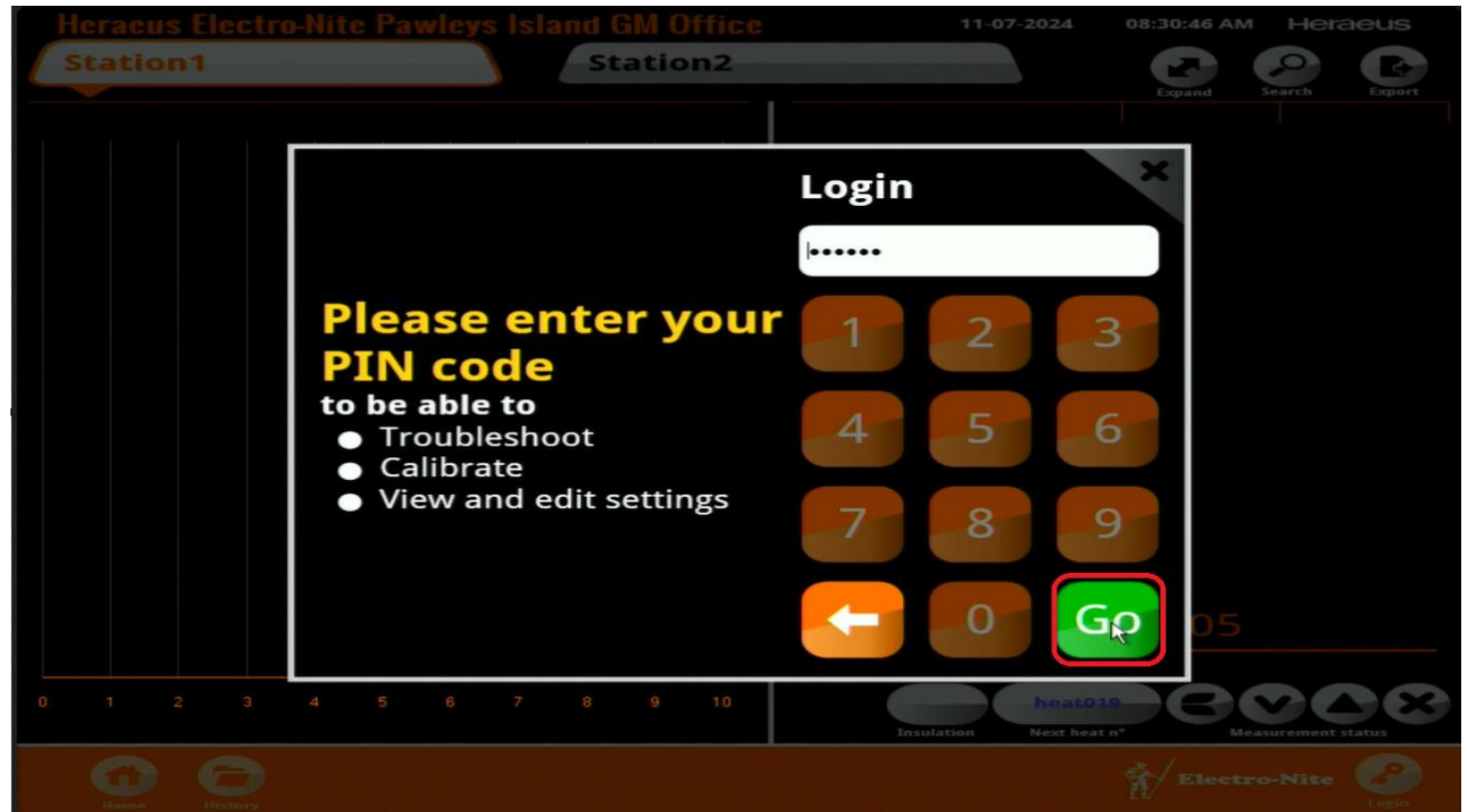


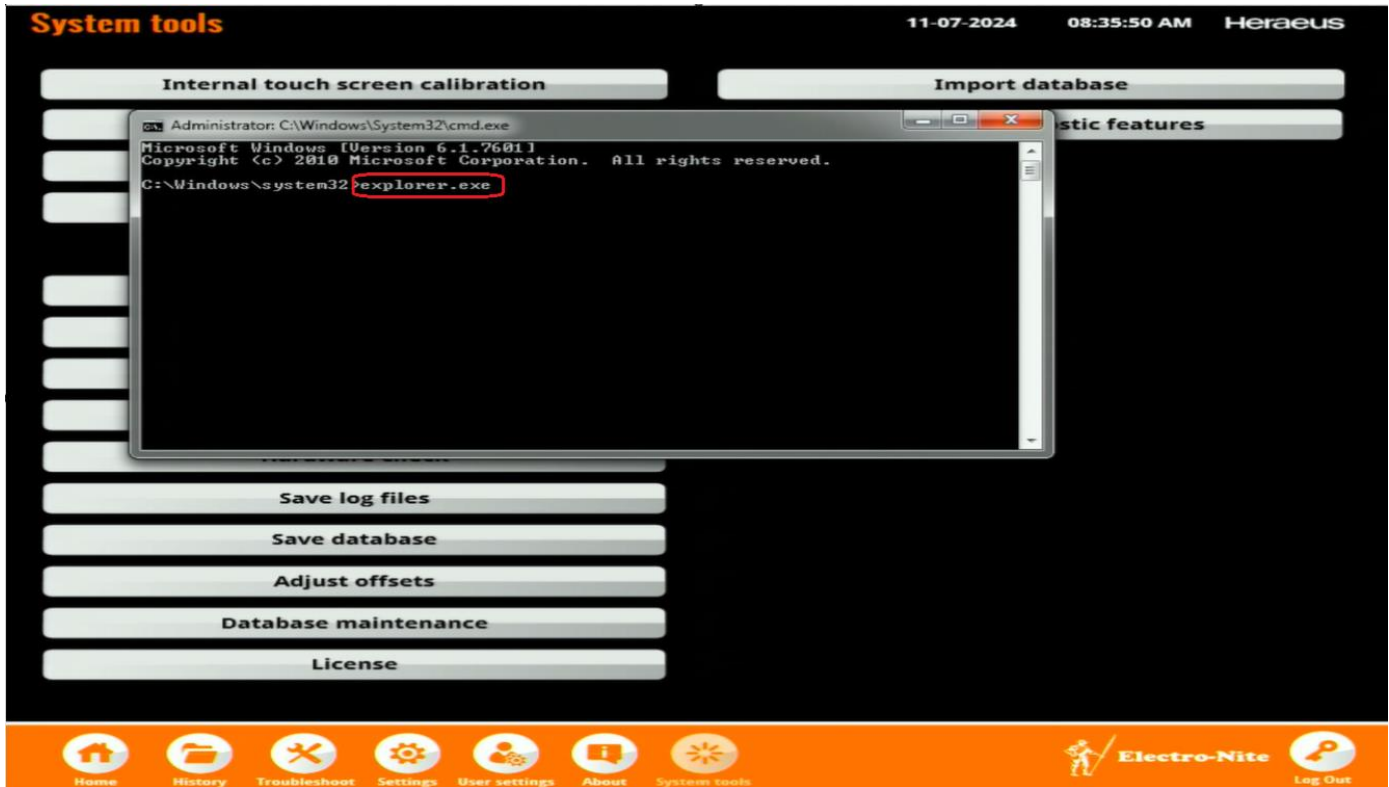
Change SLS Screen Resolution

- Log in to the SLS using the “Daily” password.

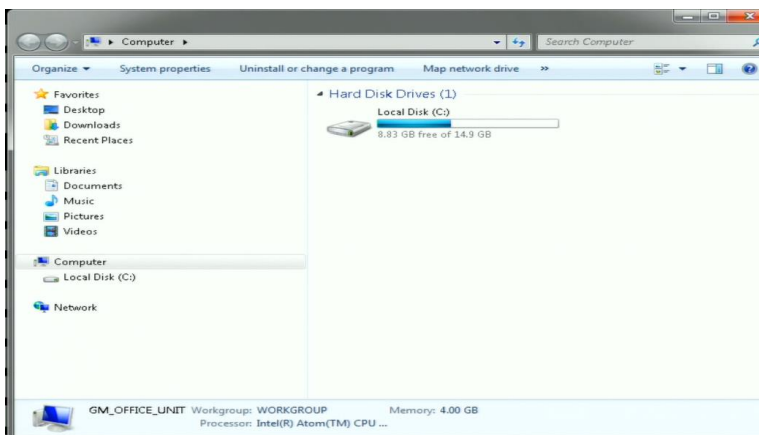


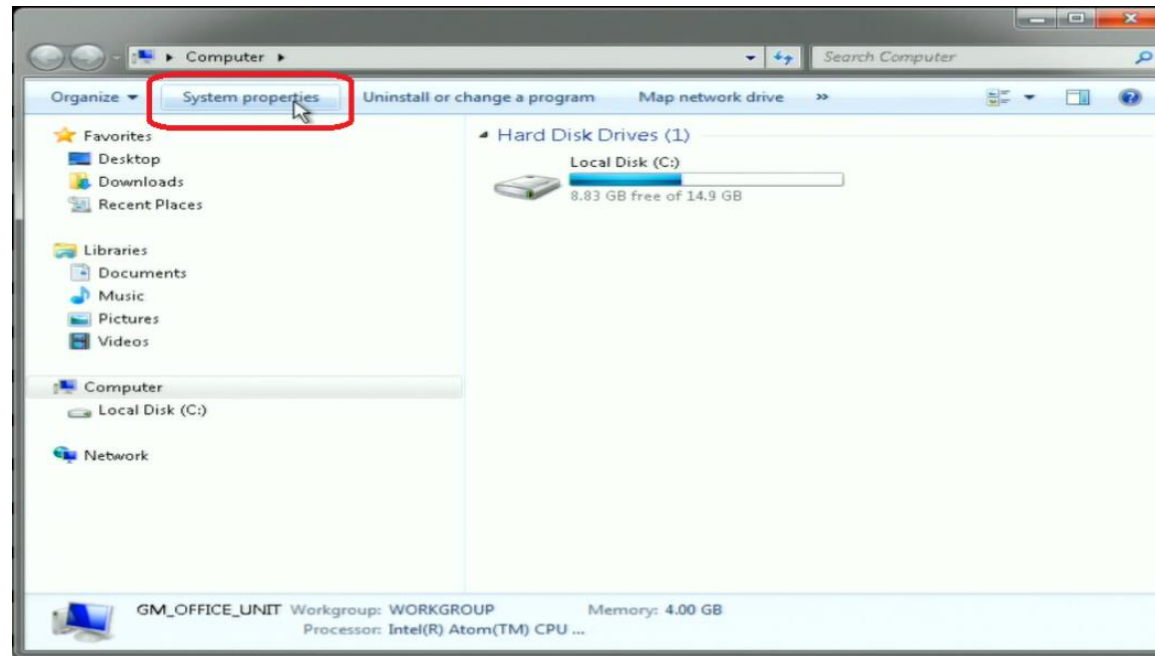
- Go to the “System Tools” screen.
- Click <Exit to operating system>



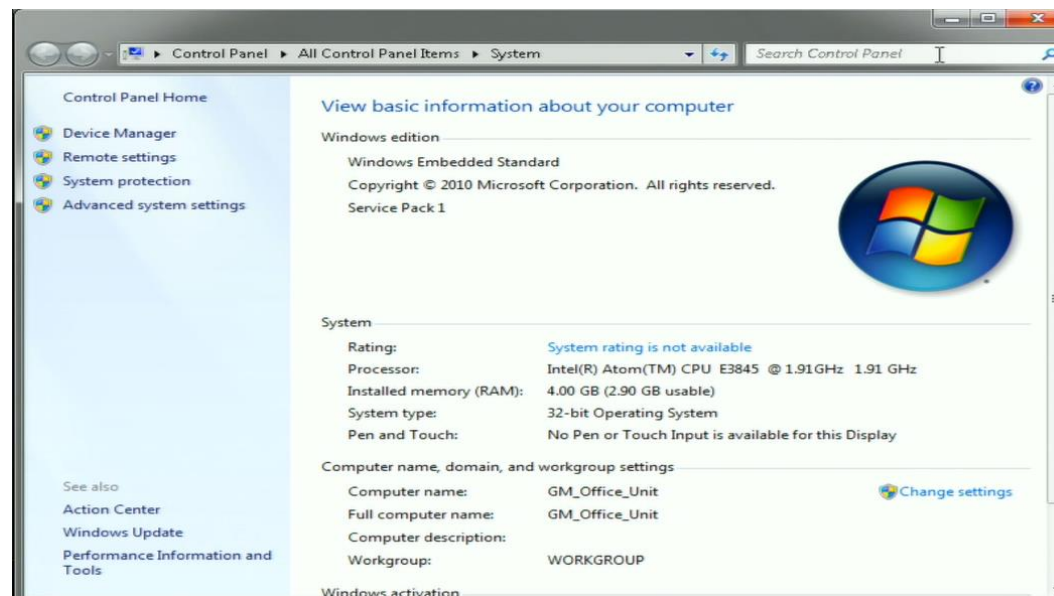


- Enter “explorer.exe” in the cmd prompt.
- This will open the file explorer window.

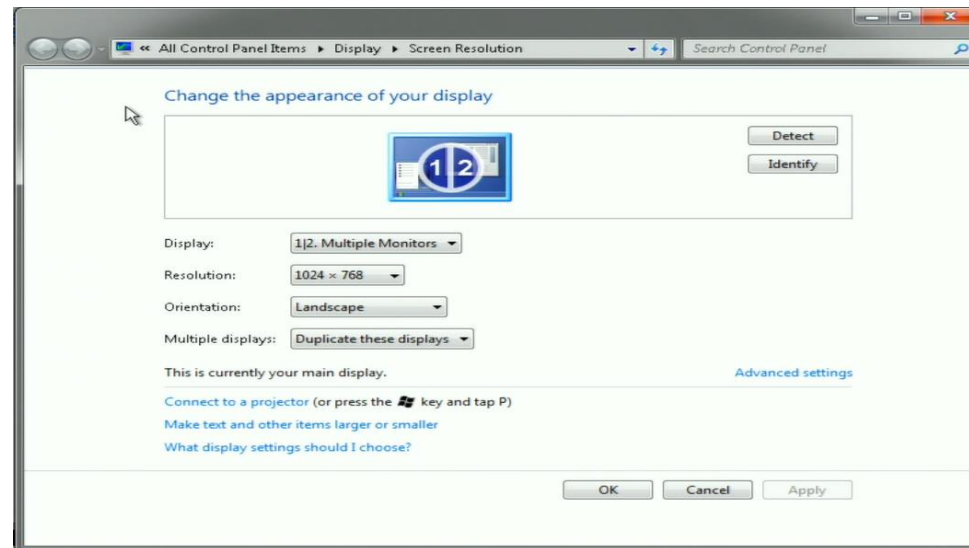
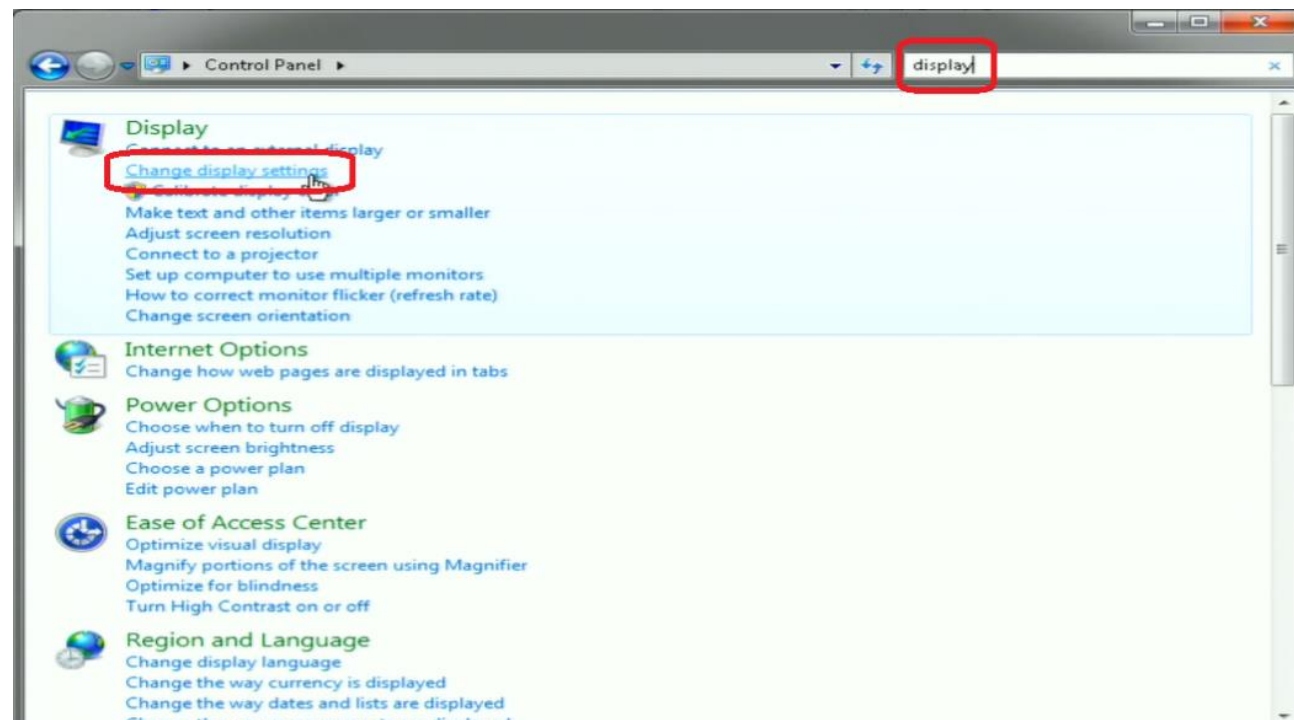




- Click the <System properties> button to bring up the “Control Panel Home” screen.



- Type “display” in the search bar in the top right to bring up the selection list.
- Click the “Change display settings” hyperlink to open the Screen Resolution screen.



- Adjust the screen resolution settings as needed.
- Click the <OK> button.
- Close all open windows.

